

Discussion

Gates of the Arctic managers might decide to use these five elements. The elements might help them to do a better job for the visitors. If the managers decide to use them, they will have to figure out how to measure each of the elements. Remember, however, that these elements only tell a small part of the story. When people visit a wilderness, there are many aspects to the experience that may never be fully known or understood.



Wondering About Wilderness

What is the difference between wild lands and wilderness? Wild lands, sometimes also called wilderness, are natural areas rich in biological diversity, and they provide many benefits to people and other animals. But how is the wilderness that is referred to in this

edition of the *Natural Inquirer* different from wild lands? A wilderness is an area of natural land or water with special legal protection. Land with this legal protection is part of a national system called the National Wilderness Preservation System. In a wilderness, people can visit but cannot

remain. They cannot take anything mechanical into a wilderness, including vehicles. Within a wilderness, nature rules! For more information about wildernesses, read page 5 in this journal or visit <http://www.wilderness.net>.

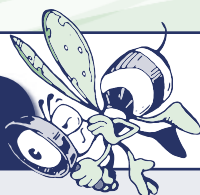
Reflection Section



- Look at table 1, element 2 (Free-Roaming Wildlife). Name one way that managers might measure this element.
- Why do you think that managers will have to measure any of the elements that they decide to use?

From Glaspell, B., Watson, A., Kneeshaw, K., and Pendergrast, D. (2003). Selecting indicators and understanding their role in wilderness experience stewardship at Gates of the Arctic National Park and Preserve, *The George Wright FORUM*, 20(3): pp. 59-71.

FACTivity



The question you will answer with this FACTivity is: What are some of the things that make a visit to Gates of the Arctic National Park and Preserve different than a visit to other wildernesses or other natural areas? The method you will use to answer this question is as follows:

After your teacher divides your class into small groups of 4-5 students,

appoint someone to record your discussion. Look at each element in table 1 and the example descriptions, one at a time. Using a discussion format, answer all three of the following questions for each element. You can use the chart on the next page as a guide to completing this exercise.

1. The element expresses something about a relationship. Was the relationship

between a person and some other thing or things? If so, what was or were the other thing or things? Was the relationship between the person and something else inside of them, like a feeling or emotion? If so, what was it? Was it a combination? If so, how?

2. The scientists thought that the remoteness of Gates of the Arctic National Park and Preserve might make the experience there different than other wildernesses. How might this element be different for a visitor to Gates of the Arctic than for a visitor to a wilderness located near a large city like Atlanta, Georgia, or Los Angeles, California?

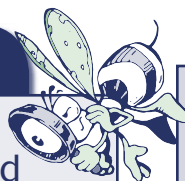
3. Think about natural areas that are not wildernesses. When people hike and camp in these areas, they can drive off-road vehicles and carry any kind of

machines that could help them survive or be more comfortable in the outdoors. How might this element be different for people when visiting natural areas that are not wildernesses, compared with Gates of the Arctic National Park and Preserve?

Pick someone from your group to present your findings to the class. Were the different groups' findings similar or different? Discuss the findings with your classmates and come to a group agreement about the similarities and differences and the reasons for those similarities and differences between outdoor recreation experiences at three types of areas: (1) Gates of the Arctic National Park and Preserve, (2) other wildernesses, and (3) natural areas that are not federally protected wilderness.

Question	Group Discussion and Answers
Element One	
1	
2	
3	

FACTivity Extension



Visit Gates of the Arctic National Park and Preserve Web site at <http://www.nps.gov/gaar/home.htm>. After having a chance to read about Gates of the Arctic National Park and Preserve, discuss some of the key values represented by this area with your classmates.



If you are a Project Learning Tree-trained educator, you may use PLT Activity #54, "I'd Like To Visit a Place..." as an additional activity resource.