



Time Needed

One class period

Materials

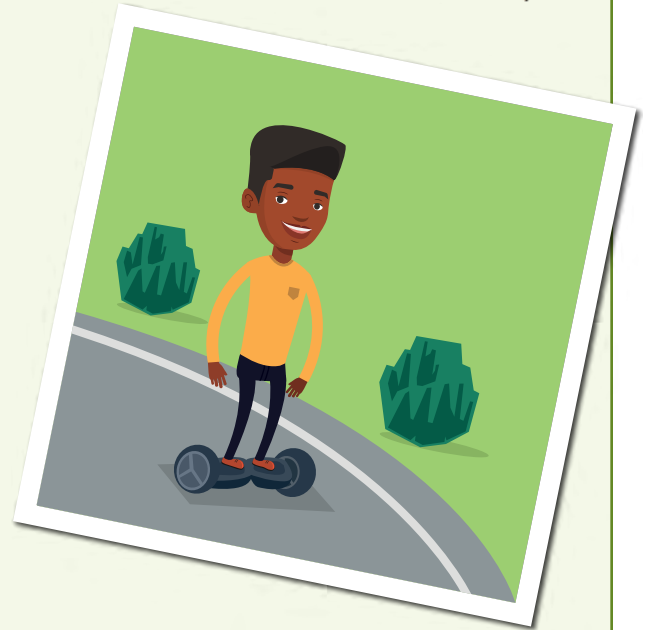
- Computer
- Graphic organizer



The questions you will answer in this FACTivity are:

How does a park in your area offer visitors (1) refuge or stress relief, (2) inspiration or a spark to the imagination, and (3) connection with friends, family, and the community?

Also, how can your local park improve and help people feel more welcome and safer?



Methods

1. Choose a local area park and research the features of that park. A good place to look online would be your local parks and recreation department or leisure services. Does the park have walking trails, a dog park, a pool, basketball courts, etc.? Can people who are differently abled (like those who use a wheelchair or those who are visually impaired) easily use the park facilities? Does the park have special events or activities planned? (Use the graphic organizer on page 44 to take notes.)
2. Now that you know more about your local park, brainstorm ways that your park could improve in the three areas listed above as well as ways your park could help people feel safe and welcome.
3. Discuss your ideas as a class and write a letter to your local parks department to share your suggestions.

Lend a Hand— Care for the Land!



Using your ideas about your local park, design your own ideal park that would offer visitors all the benefits listed above and help visitors feel safe and welcome.

OR

Design an event to be held at your local park that would encourage more visitors to enjoy the park. What activities could your event include that would help visitors feel safe and welcome? (For example, guided trail hikes, scavenger hunts, or teaching sessions.)

Deliver a presentation explaining your ideas as if you were presenting to your parks department. Visual aids, like a poster or a model, might be helpful.

Graphic Organizer

Student names:

Name of local park:

Website or resource for information on the park:

Benefit of visiting the park	Features in my local park	Ways my local park can improve
Stress relief/ refuge		
Inspiration/ imagination		
Connection with friends, family, and community		