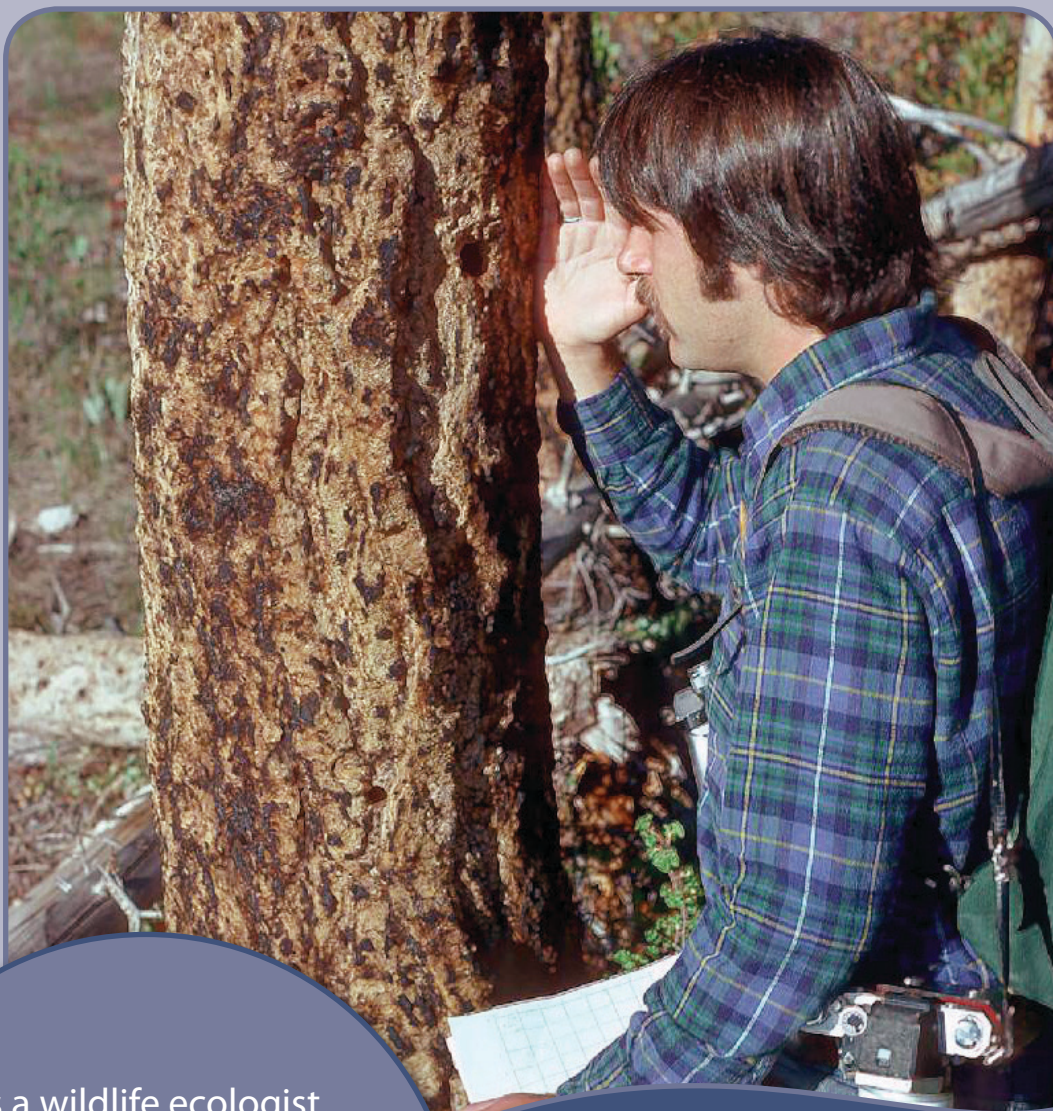




Meet the Scientist!



As a wildlife ecologist, I study populations of wildlife and the types of habitat they use to better understand how to conserve species that are at risk.

Dr. Marty Raphael

Wildlife Ecologist

Ph.D., University of California, Berkeley
USDA Forest Service scientist



<http://www.naturalinquirer.org>

Important Scientist Characteristics

- ★ Critical thinking
- ★ Logic
- ★ Careful observation

Example of a simple research question I have tried to answer:

What is the status and trend of populations of the Marbled Murrelet?

Technology or equipment used in research:

We use small outboard motor boats and survey ocean waters along the coast from these boats to count the murrelets.

Most Exciting Discovery

We found that Marbled Murrelets can fly over 100 miles a day between their nests deep in the forest and the ocean waters where they dive for small fish.

When did you know you wanted to be a scientist?

At an early age I loved going out to hunt for snakes, frogs, lizards, or any other kind of animal I could find. But I didn't think about becoming a professional biologist until much later, at about age 25.

<http://www.fs.fed.us/pnw/olympia/wet/>